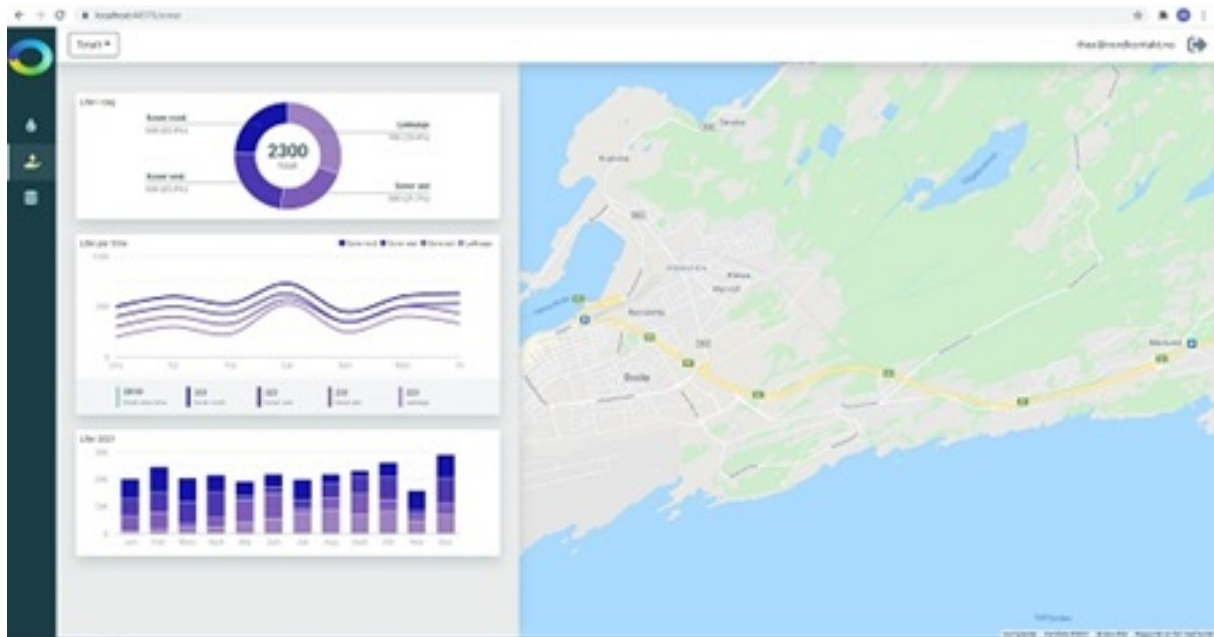




Product factsheet

Miljødashboard - Environmental Dashboard

Software solution



Description

The Environmental Dashboard is suitable for visualizing different data sources, and with different levels of detail. Apart from the water domain, the Environmental Dashboard is also used for traffic mapping and water management (as part of other projects).

Target audience

It is being developed with three user groups in mind. 1st technical staff, 2nd administration, 3rd audience.

Actors, their roles and interactions

Water utilities, industries, technology providers, end-users, their roles and their interactions.

Technical requirements

Ordinary PC, tablets or any smart phone.

Software data

- Version: 2.0
- Initial release: 2023
- License type: Commercial

URL

<https://www.miljodashboard.no/>

Technology applied by the product

- Resource for Circular Economy

Costs

The product is not fully developed, and not priced. In the future, we will also work with a business model that takes care of the product's living costs.

Technology Readiness Level

Level 2

Case Study applying the product

Bodø, Norway



<https://mp.watereurope.eu/d/CaseStudy/34>

Related tags

water environment power waste air quality traffic

Downloads

The following file can be downloaded from the online page of the product: <https://mp.watereurope.eu/d/product/65>

- [Training material of the tool](#)